

Who Provides Child Care During Nontraditional Hours?



Nationwide, around 5 million children under age 6 live with a parent who works a nontraditional schedule, which we define as any hours outside of 7 am to 6 pm Monday to Friday. However, very little is known about the supply of licensed nontraditional-hours child care. The purpose of this study was to examine the characteristics of nontraditional-hours child care providers in six states (Illinois, Minnesota, Missouri, Oregon, Washington and Wisconsin).

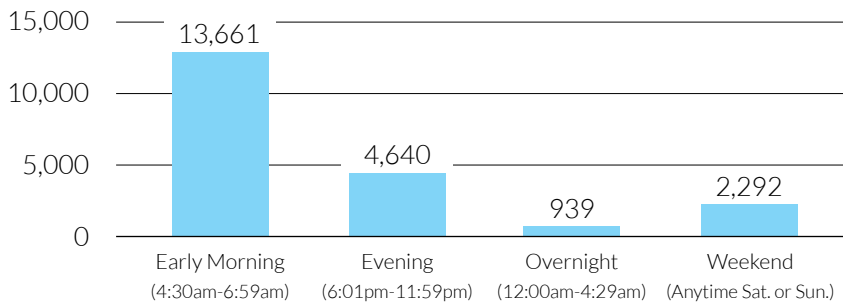
KEY FINDINGS



37% of providers were open during nontraditional hours.

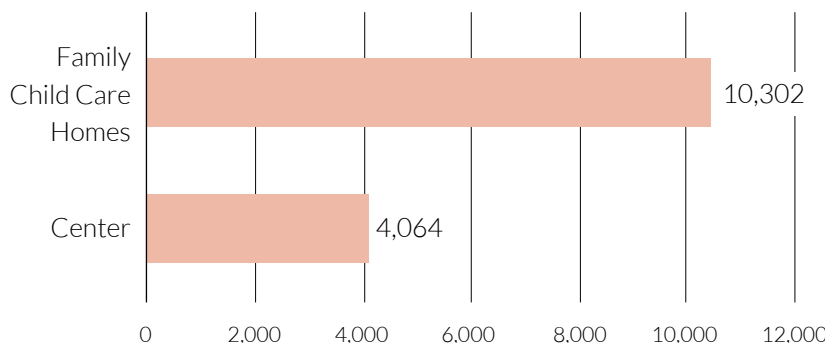
On average, these providers were **open 16 nontraditional hours per week.**

Number of Providers Offering NTH by Time of Day



Evening, weekend, and overnight care are offered by few providers, potentially limiting availability of child care for families working night or weekend shifts.

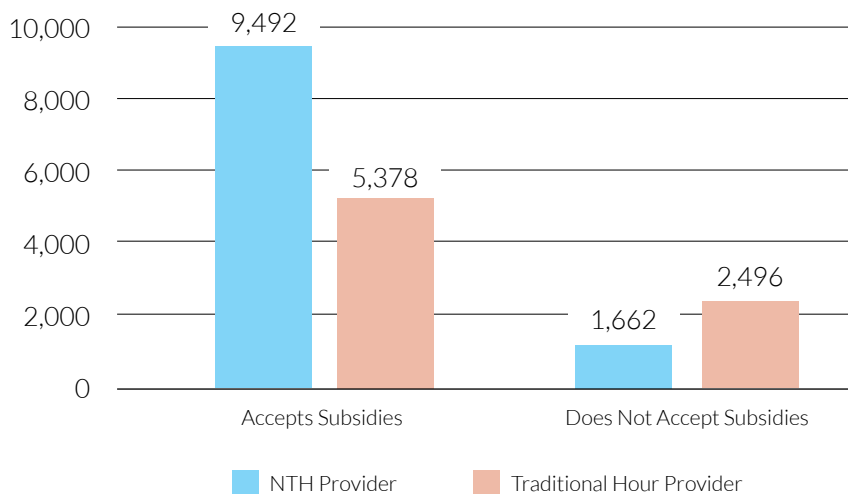
Nontraditional-Hour Providers by Type



The majority of nontraditional-hours providers were family child care (FCC) homes (63%). On average, FCC homes offered 17 nontraditional hours and centers offered 11 hours per week.

Child Care Subsidy Acceptance

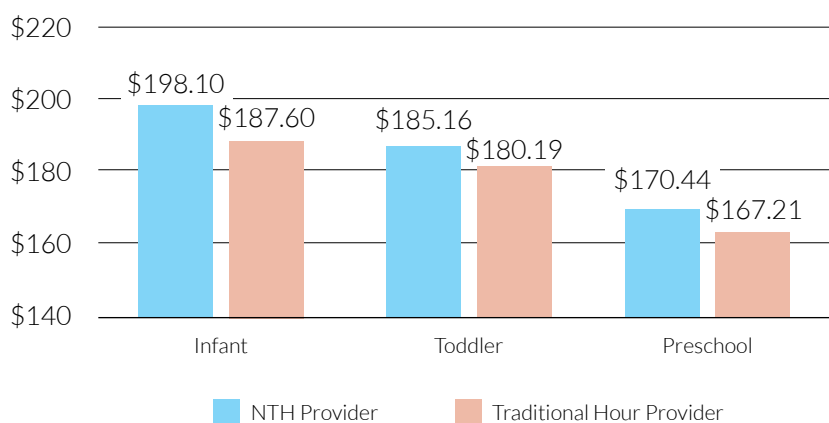
Nontraditional-Hour (NTH) vs. Traditional Hour Providers



More providers who offer nontraditional-hours care accept subsidies than traditional-hour providers. This means that eligible families served by nontraditional-hours providers may have increased access to subsidy.

Average Weekly Prices

Nontraditional-Hour (NTH) vs. Traditional Hour Providers



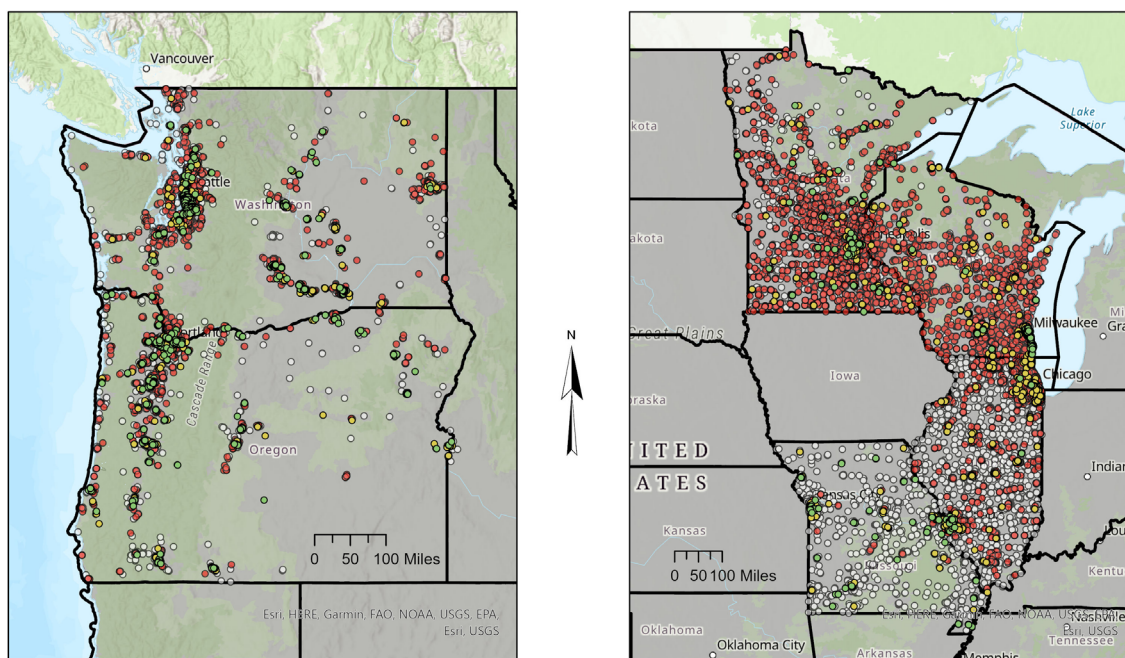
Providers offering nontraditional-hours care have higher prices on average than traditional-hour providers, potentially leading to more out-of-pocket cost for families needing care during those times.

Who Provides Child Care During Nontraditional Hours?

Our team also categorized nontraditional-hours providers into three profiles to understand the differences between these providers. Overall, the majority of nontraditional-hours providers fell into the “few nontraditional hours” category – meaning they only offer a few hours per week outside of traditional hours. The map below shows the distribution of nontraditional-hours child care among the six states included in this study.

Category	Number of Nontraditional-Hours Providers	Average Number of Nontraditional-Hours per Week
Few Nontraditional Hours	12,056 (84%)	7 hours
Some Nontraditional Hours	1,653 (11%)	44 hours
Most Nontraditional Hours	657 (5%)	96 hours

Early Care and Education Providers' Hours of Operation



Data Sources:
ECE Providers — Child Care Data Center (CCDC; 2020), Child Care Aware® of America.

Map by J. A. Cooper
February 2023
Child Care Aware® of America.

ECE Providers
LPA Profile
Membership

- Little NTH
- Some NTH
- Most NTH
- Traditional Hour Provider

METHODS

Child Care Aware® of America (CCAoA) analyzed data from the Child Care Data Center (CCDC), which includes data from six states: Illinois, Minnesota, Missouri, Oregon, Washington and Wisconsin. These states submitted provider-level data from 2019 which contained variables such as location, hours of operation, quality rating and improvement system (QRIS) participation, subsidy acceptance, prices and licensed capacity.

This study focused on those who provided child care for children under age 6 (N = 39,241). Of this final dataset, 14,366 providers offered nontraditional-hours care (37%), 19,618 did not offer any nontraditional-hours care (50%), and 5,257 did not report hours of operation (13%).

This project was supported by the Administration for Children and Families (ACF) of the United States (U.S.) Department of Health and Human Services (HHS) as part of a financial assistance award (Grant #: 90YE0230) totaling \$100,000 with 100 percent funded by ACF/HHS. The contents are those of the author(s) and do not necessarily represent the official views of, nor an endorsement by, ACF/HHS, or the U.S. Government. For more information, please visit the ACF website, Administrative and National Policy Requirement