



Strong Leaders, Strong Child Care

2024 Leadership Institute

October 16–17, 2024 | Salt Lake City, UT

#CCAoALeadership24

Welcome to CCAoA's 2024 Leadership Institute

"This is the biggest issue everybody listening tonight knows."
"I think there is a bipartisan solution here because a lot of us care about this issue."

Those are quotes from the Democratic and Republican candidates for Vice President, and the issue that they are talking is child care. Friends, there was a question about child care in a national debate! Not only that, but the candidates agreed that there is broad bipartisan support for child care, family choice matters, and both supply and demand investments are needed.

America is indeed child care aware. Now it's up to us to make it child care strong. This Leadership Institute – Strong Leaders, Strong Child Care – is about our field putting a firm stake in the ground on the essential role child care resource and referral leaders play in creating strong child care.

That starts with being clear and bold about who we are. We will share a new position statement on the critical role of child care resource and referral organizations – developed with our members and leaders across the country – that creates a shared definition of what our field does and why it matters. I'm excited to collaborate with you about how we can use this statement to position our field for success.

We also will hear from strategic communications experts at Neimand Collaborative about how we can all use Child Care Aware® of America's new brand framework to drive greater engagement, consistency, and impact in our collective work in our communities, states, and the nation. It's built on the brand promise that everyone is stronger when we make America child care strong.

There is so much rich content to delve into over the next two days. We'll talk about getting child care on the economic development agenda and into community projects and investments, learn how to improve child health through partnerships with local health departments, hear about making the most of the post-election environment to move child care policy, and much more.

The moment is ours to seize. We must continue to come together for conversation, collaboration, innovation, and action so that we can make the most of it. Never before has America been more child care aware, never have we had such a great opportunity to make America child care strong.



Susan Gale Perry
CEO, Child Care Aware® of America



Connect to
the Wi-Fi 

Network:
Radisson Conference

Password:
2024CCAQA

Schedule at a Glance

October 15

October 16

October 17

<p>5PM - 7PM Registration/Information Desk Open</p>	<p>7AM - 5PM Registration/Information Desk Open</p>	<p>7AM - 5PM Registration/Information Desk Open</p>
	<p>7AM - 8AM Breakfast </p>	<p>8AM - 4:30PM Exhibits Open</p>
	<p>8AM - 5PM Exhibits Open</p>	<p>8AM - 9AM Breakfast </p>
	<p>8:30AM - 9AM Welcome Address</p>	<p>9AM - 9:15AM Welcome to Day 2</p>
	<p>9AM - 10:15AM Opening Plenary </p>	<p>9:15AM - 10:30AM Plenary </p>
	<p>10:15AM - 10:30AM Break with Exhibitors</p>	<p>10:30AM - 10:45AM Break with Exhibitors</p>
	<p>10:30AM - 11:45AM Plenary </p>	<p>10:45AM - 12PM Plenary </p>
	<p>11:45AM - 12PM Break with Exhibitors</p>	<p>12PM - 1PM Lunch </p>
	<p>12PM - 1PM Lunch </p>	<p>1PM - 1:15PM Break with Exhibitors</p>
	<p>1PM - 1:15PM Break with Exhibitors</p>	<p>1:15PM - 2:30PM Concurrent Sessions</p>
	<p>1:15PM - 2:30PM Concurrent Sessions</p>	<p>2:30PM - 3PM Break with Exhibitors </p>
	<p>2:30PM - 3PM Break with Exhibitors </p>	<p>3PM - 4:15PM Concurrent Sessions</p>
	<p>3PM - 4:30PM Plenary </p>	<p>4:15PM - 4:30PM Break with Exhibitors</p>
	<p>4:30PM - 5PM Break with Exhibitors</p>	<p>4:30PM - 5PM Closing Remarks</p>
	<p>5PM - 6PM Reception</p>	<p>5PM Leadership Institute Concludes</p>

Wednesday | October 16

7AM – 5PM **Registration/Information Desk Open**

Wasatch Foyer

7AM – 8AM **Breakfast**

Wasatch Ballroom 234

8AM – 5PM **Exhibits Open**

Wasatch Foyer

8:30AM – 9AM **Welcome Address**

Wasatch Ballroom 234

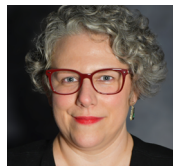
9AM – 10:15AM **Opening Plenary**

Insights from Past and Present Child Care Administrators



Wasatch Ballroom 234

Enjoy a candid conversations with leaders who are or have served as State Child Care Administrators. Explore their perceptions of and relationships with CCR&Rs, some of their key lessons learned, and how they think we can collectively influence and partner best with this critical group of state leaders.



Ariel Ford, Senior Vice President, Program Impact, Child Care Aware® of America, Former NC State Administrator

Caitlin Molina, Senior Vice President, Operational Performance, Child Care Aware® of America, Former RI State Administrator

Miriam Calderón, Chief Policy Officer, Zero to Three, Former OR State Administrator

Heather Thomas, Director, Utah Office of Child Care, Department of Workforce Services

Dan Harris (Moderator), Executive Director, Illinois Network of Child Care Resource and Referral Agencies

10:15AM – 10:30AM **Break with Exhibitors**

Wasatch Foyer

10:30AM – 11:45AM **Plenary**

A New Framework to Drive Our Collective Impact

Wasatch Ballroom 234

Discover how CCAoA's new brand framework can help us all drive greater engagement, consistency, and impact in our collective work and shared identity. Hear from strategic communications experts at Neimand Collaborative about how Child Care Aware® of America is sharpening its value proposition for CCAoA and CCR&Rs to meet the moment and seize the future. It's built on the brand promise that everyone is stronger when we make America child care strong.



Rich Neimand, Founder, Neimand Collaborative
 Tracy Zimmerman, Vice President, Policy and Strategy, Neimand Collaborative

11:45AM – 12PM **Break with Exhibitors**

Wasatch Foyer

12PM – 1PM **Lunch**

Wasatch Ballroom 234

1PM – 1:15PM **Break with Exhibitors**

Wasatch Foyer

1:15PM – 2:30PM **Concurrent Sessions**

**Relax at the
 VIP Lounge!**

Hosted by:



The VIP lounge can be accessed by all, except during lunch on Thursday.

An Early Childhood Professional-Centered Design: Applying the principles of human-centered design to authentically engage in systems work with early childhood professionals.

Wasatch Ballroom 234

Sustainable improvements in early care and education must be informed by those caring for young children every day. Solutions at every level of the system must build on the history and lived experiences of early childhood professionals. Join this interactive session to identify ways that the principles of human-centered design can be used to elevate the voices of early childhood professionals in systems work.

Cama Charlet Cole, Buffett Early Childhood Institute

1:15PM – 2:30PM

Concurrent Sessions (*continued*)

Access CCAoA's Election Resources



Child Care in the 2024 Election and Implications for CCDBG

Parleys 1&2

What scenarios could we see in the next Congress after November's election, and how would these scenarios impact child care policy? Participants will hear from speakers about scenarios we could see in the next Congress after November's election, how these scenarios would impact child care policy, including a potential Child Care and Development Block Grant (CCDBG) reauthorization, and federal advocacy strategies. Participants will then have time to discuss changes they wish to see in a potential CCDBG reauthorization.

Elise Cranston, Director of Advocacy, Child Care Aware® of America

Anne Hedgepeth, Senior Vice President, Policy and Research, Child Care Aware® of America



CCR&Rs - Community Collaboration and Partnership During Emergency Events

Cottonwood

Partnerships allow Child Care Resource and Referral agencies (CCR&Rs) to focus resources on unmet needs in a community and ensure that families and child care providers receive services based on the expertise of various organizations and agencies. In this session, the Emergency Preparedness, Response, and Recovery team at Child Care Aware of America will discuss the importance of collaborating with local and state emergency management agencies, public health officials, and other community stakeholders so that child care is at the table for emergency preparedness and response planning. Establishing partnerships in advance increases the likelihood that trusted partners can be called upon before, during, and after a disaster to meet the needs of child care in an efficient and effective manner. We will also share our newly-developed resource, *Child Care Emergency Preparedness, Response, and Recovery Partnership Toolkit For Child Care Resource & Referral Agencies*.

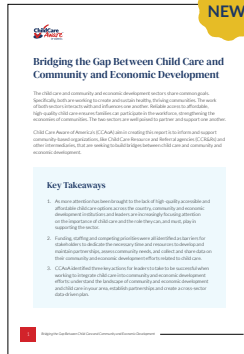
Julie Looper Coats, Director, Emergency Preparedness and Response, Child Care Aware® of America

Holly Nett, Director, Child Care Emergency Partnerships, Child Care Aware® of America



1:15PM – 2:30PM

Concurrent Sessions *(continued)*



Bridging the Gap: A Look at CCAoA's New Roadmap for Child Care and Community & Economic Development

Wasatch Ballroom 1

While child care is critical to business and workforce needs, it is often left out of or under-represented in community and economic development agendas, activities, projects, and investments. Informed by a landscape analysis and report findings, *A Roadmap for CCR&Rs & Intermediaries: Bridging the Gap Between Child Care and Community & Economic Development*, can be used by community organizations that support child care as a tool to inform outreach and cross-system engagement efforts and to help infuse child care into community and economic development conversations and efforts. The roadmap outlines how community and economic development is defined, the important role child care plays and steps to implement to create a strong and sustainable plan to strengthen the child care landscape through community and economic development efforts.

- Shannon Cameron-Quinn**, Early Care and Education Specialist, Child Care Aware® of America
- Shelly Masur**, ECE Vice President, Advisory and State Policy, Low Income Investment Fund
- Mollie Smith**, Executive Director, Child Care Answers
- Tracey Adams**, Community Services Manager, thread
- Jen Clark**, Professional Development Director, thread



Enter to Win \$250!
Complete your CCAoA Exhibitor Passport by 11AM on Thursday.

Please turn in your exhibition passport at the registration desk.



2:30PM – 3PM

Break with Exhibitors *(Snacks Available)*

Wasatch Foyer

3PM – 4:30PM

Plenary

Unified Voices, Stronger Impact: Who are We and Where are We Going?

Wasatch Ballroom 234

Be the first to hear findings from CCAoA's national survey of organizations delivering state or community-based CCR&R services. Then, get a first look at CCAoA's Draft Position Statement on CCR&R. This interactive session will focus on the critical importance of defining our field and the power of speaking with a unified voice.



Susan Gale Perry, CEO, Child Care Aware® of America

Anne Hedgepeth, Senior Vice President, Policy and Research, Child Care Aware® of America

Robyn Lopez Melton, Director, The Research Institute at Western Oregon University, Child Care Aware® of America Board Member

Ariel Ford, Senior Vice President, Program Impact, Child Care Aware® of America

Susan Butler-Staub, Senior Director, Professional Development, Child Care Aware® of America

4:30PM – 5PM

Break with Exhibitors

Wasatch Foyer

5PM – 6PM

Reception

Wasatch Foyer

Join us for an engaging evening reception, proudly sponsored by Kaplan. Enjoy refreshments, network with fellow attendees, and celebrate our shared commitment to advancing education and professional growth.



Thursday | October 17

8AM – 4PM Exhibits Open

Wasatch Foyer

8AM – 9AM Breakfast

Wasatch Ballroom 234

9AM – 9:15AM Welcome to Day 2

Wasatch Ballroom 234

9AM – 10:15AM Plenary

Bridging Gaps: The Intersection of Child Care, Economic Development, and Community Investment

Wasatch Ballroom 234

Discover innovative strategies for CCR&Rs to engage with economic development initiatives and build partnerships with business entities in their communities. In this session, you'll hear from experts at the Low-Income Investment Fund (LIIF) and the U.S. Chamber of Commerce Foundation as they share valuable insights on approaches CCR&Rs can implement to forge connections with businesses, collaborate with key partners like Community Development Financial Institutions (CDFIs), and play a pivotal role in local economic development. This session offers a unique opportunity to explore practical, actionable strategies that can elevate the influence of CCR&Rs in fostering community growth and economic resilience.



Kabi Catalano, Executive Director, Utah Community Builders

Shelly Masur, ECE Vice President, Advisory and State Policy, Low Income Investment Fund

Aaron Merchen, Senior Director of Policy and Programs, U.S. Chamber of Commerce Foundation

Mollie Smith, Executive Director, Child Care Answers

Susan Gale Perry (*Moderator*), CEO, Child Care Aware® of America

10:30AM – 10:45AM Break with Exhibitors

Wasatch Foyer

10:45AM – 12PM

Plenary

Strengthening Support Systems: Collaborative Solutions in Child Care and Child Welfare

Wasatch Ballroom 234

In today's complex landscape, effective child care and child welfare systems are essential for ensuring the well-being of our youngest citizens. This session delves into the critical need for collaboration among various stakeholders—government agencies, non-profits, community organizations, and private sector partners—to create robust support systems that address the multifaceted needs of children and families. Join us as we explore innovative approaches and best practices for building and strengthening these support systems. We will highlight successful case studies where cross-sector partnerships have led to transformative outcomes in child care and welfare. Attendees will gain insights into effective strategies for fostering collaboration, leveraging resources, and overcoming common challenges.



Domenica M. Marquez, Director of Provider Services, California Child Care Resource and Referral Network

Bridgette Lery, Senior Fellow, Center on Labor, Human Service, and Population, Urban Institute
Encarni Gallardo (Moderator), Executive Director, Children's Service Society of Utah

12PM – 1PM

Lunch

Wasatch Ballroom 234

1PM – 1:15PM

Break with Exhibitors

Wasatch Foyer



1:15PM – 2:30PM

Concurrent Sessions

A Market Price Story: Re-envisioning Technical Assistance to Level-up Statewide Data Collection

Cottonwood

Embark on an Oregon adventure and unravel Oregon's latest Market Price Survey journey. From precision planning to developing trusty tools and steadfast supports, this presentation unveils how Oregon paved the way for their early learning system to shape a data-driven future. Dive into the creation of accessible support materials and technical assistance that Oregon has implemented to improve data collection.

Valeria Anderson, Find Child Care Oregon Lead Project Specialist, Central Coordination Child Care Resource & Referral (CCR&R)

Igniting Change: Building a Stronger Future for FCC Through SFCCNs

Wasatch Ballroom 1

Join us for this interactive Peer Learning Community (PLC) session where we'll dive into the latest strategies and best practices for supporting Family Child Care (FCC) through Staffed Family Child Care Networks (SFCCNs). We'll hear firsthand from experts who have successfully developed and coordinated SFCCNs, sharing their valuable insights and lessons learned. Discover how to create impactful programming and opportunities for FCC providers, enhance your network's effectiveness, and connect with like-minded professionals.

Shanonn Cameron-Quinn, Early Care and Education Specialist, Child Care Aware® of America
Dee Dee Thurber, Program Manager, Child Care Aware® of New Hampshire

Meeting the Moment: What's Next After the End of Federal Relief?

Parleys 1&2

There is a lot of noise, but also uncertainty around what is next for child care funding and policy. In 2025, child care stakeholders are looking at new opportunities and potential challenges—newly elected federal and state officials, implementing recent CCDF Rule requirements, and navigating the first year post-ARPA funding are all on the table. With all states in session in 2025, CCR&R leaders will need to make decisions that best fit their legislative priorities, context, and organizational capacity to engage in advocacy for the upcoming year. Join the CCAoA Policy & Advocacy team to discuss how to make the most of this moment and hear from other CCR&R leaders as we talk through priorities, decisions, tactics, and partnerships for your upcoming policy and advocacy work.

Elise Cranston, Director of Advocacy, Child Care Aware® of America
Diane Girouard, State Policy Senior Analyst, Child Care Aware® of America
Emily Adams, Policy Associate, Child Care and Early Childhood Programs, American Public Human Services Association

Follow Us on Social Media

#CCAoALeadership24

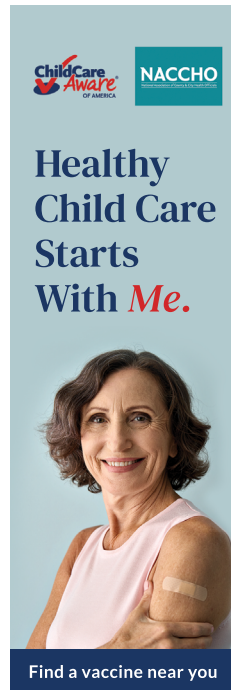


2:30PM – 3PM

Break with Exhibitors *(Snacks Available)*

Wasatch Foyer

3PM – 4:15PM

Concurrent Sessions


Child Care Aware
OF AMERICA

NACCHO
NATIONAL ASSOCIATION
OF CHILD CARE AND
EARLY EDUCATION

**Healthy
Child Care
Starts
With *Me.***

Find a vaccine near you



● **Health Equity in Action: The Role of Child Care Resource Organizations in Community Health**

Parleys 1&2

Learn how child care resource organizations can play a critical role in improving community health through strategic partnerships with local health departments and other public health organizations. This session will highlight strategies for effective partnerships and share toolkit resources which aim to improve health and enhance your organization's community impact.

Nikki Garro, Director, Early Childhood Health Programs, Child Care Aware® of America
Crystal Crowell, Early Care and Education Health Specialist, Child Care Aware® of America
Amanda Green, Senior Director, Healthy Child Care Initiatives, Child Care Aware® of America
Renée Boynton-Jarrett, Associate Professor, Boston Medical Center

● **Centering Lived Experience to Develop Beloit's Child Care Action Plan**

Cottonwood

This session will provide an overview of our collective work in Beloit, Wisconsin, which sought to surface the root challenges of the city's child care crisis and formulate recommendations through listening to the voices of those most impacted, families and providers. The session will invite participants to practice key components of our process.

Marissa Ortiz, Senior Associate, Early Care and Education Policy, Afton Partners

● **Harnessing Public-Private Partnerships for Sustainable Solutions**

Wasatch Ballroom 1

To make child care strong, the system needs investment. Learn more about several models, federal and state, that leverage funding from public and private sources to support and grow the child care system. Brainstorm and discuss with participants the pros and cons of different approaches, and consider what might work for your community. As an expert on your community's child care needs, this session will offer an opportunity for participants to consider their role, from advocate to administrator, as these models continue to be a topic of conversation in our field.

Diane Girouard, State Policy Senior Analyst, Child Care Aware® of America
Anne Hedgepeth, Senior Vice President, Policy and Research, Child Care Aware® of America

4:15PM – 4:30PM

Break with Exhibitors

Wasatch Foyer

4:30PM – 5PM

Closing Remarks

Wasatch Ballroom 234



Exhibitor Passport

Complete this passport by visiting the participating exhibitors.

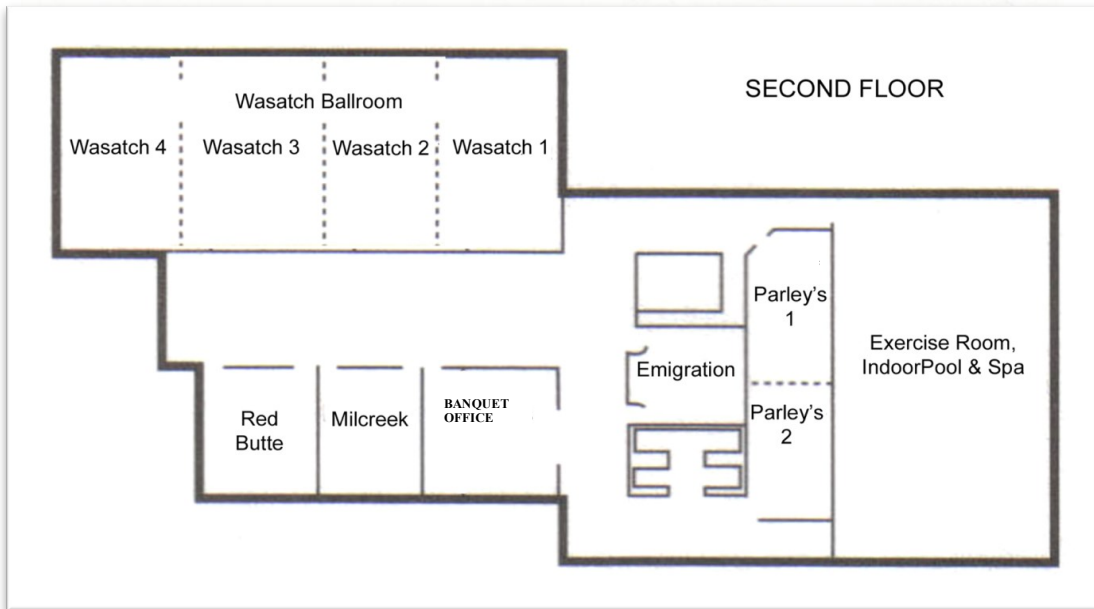
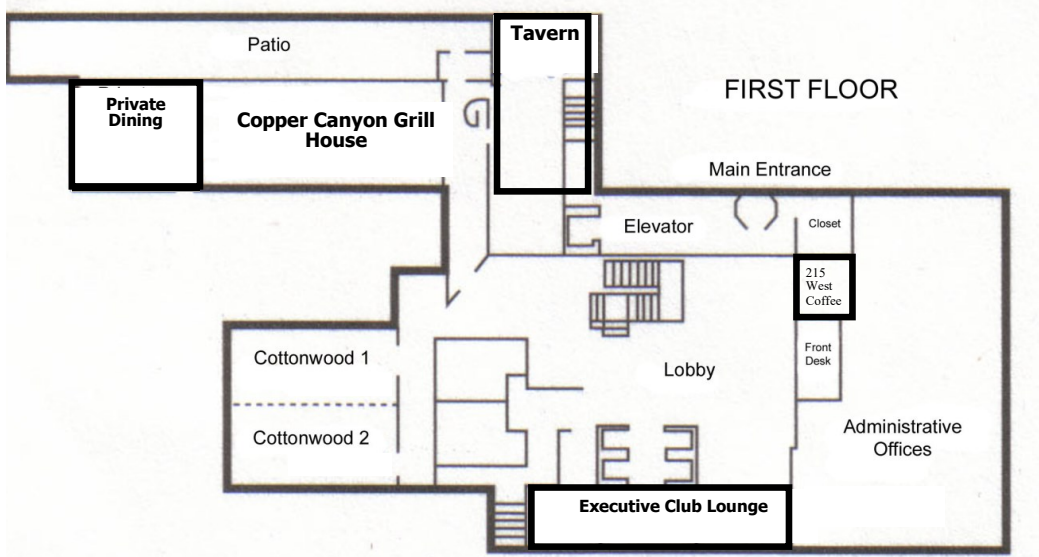
- Return your completed Exhibitor Passport no later than **11AM** on **Thursday, October 17th** to the registration table.
- The \$250 prize winner will be announced during the Thursday's Lunch break.

Exhibit Hall Schedule:

Wednesday, October 16
8AM – 5PM

Thursday, October 17
8AM – 4:30PM

Hotel Map



Board of Directors

Board Officers

President

Renée Boynton-Jarrett, M.D., Sc.D.,
Associate Professor,
Boston Medical Center

Vice President

Encarni Gallardo, MBA,
Executive Director,
Children's Service Society

Treasurer

Steven McCullough,
Chief Operating Officer,
Share Our Strength

Secretary

Dan Harris,
Executive Director,
Illinois Network of Child Care Resource and Referral Agencies

Board Members

Beverly Lynn, Ed.D.,
Former Chief Executive Officer, Programs for Parents, Inc.

Carolyn S. Stevens, MPA,
Consultant, Department of Defense

Jerry Croan, MCP,
Senior Fellow, Third Sector Capital Partners, Inc.

Dannette Smith, MSW,
Behavioral Health Administration Commissioner,
Colorado Department of Human Services

Fannie Glover,
Former Senior Director of Equity & Inclusion, Early Care
and Learning Council

Jerry Croan,
Independent Consultant & Senior Fellow, Third Sector
Capital Partners Inc.

Kelvin Chan, Ph.D, MTS, MPH,
Executive Director, Black Family Philanthropies

Kristin Thorn, JD,
Public Health Industry Lead, Accenture

Meredith Lozar, MHR, ACF,
Senior Director of Strategic Engagement, U.S. Chamber of
Commerce Foundation, Hiring Our Heroes

Patina Park (Mnicoujou Lakota-Cheyenne River),
Executive Director, Tribal State Relations Office of
Minnesota Governor Tim Walz and Lieutenant Governor
Peggy Flanagan

Robyn Lopez Melton,
Director, Center on Early Learning and Youth Development,
The Research Institute at Western Oregon University

Rodney Adams,
Chief Executive Officer, R. Adams & Associates LLC

Sandy Maldonado, M.Ed.,
Director of Early Learning, Child Care Aware® of
Washington

Stephanie Berglund, MSW,
Chief Executive Officer, thread

Terri Helms, MA,
Program Director, Child Care Aware® of West Central
Arkansas

Catherine Lester,
Associate Director, Annie E. Casey Foundation

Champion Members

ABC - Coffeyville's Christian Preschool & Childcare, LLC
 Action for Children
 Annandale Play-Care
 Arco Iris Bilingual Children's Center
 Asociación de Servicios a la Niñez
 Bergen County Office for Children
 Birdsall House
 Burlington Community Action Partnership, Inc.
 Care About Childcare at Utah Valley University
 Child & Family Resource, Inc.
 Child Care Action Council
 Child Care Answers
 Child Care Aware of Kansas
 Child Care Aware of Minnesota
 Child Care Aware of New Hampshire
 Child Care Aware of Northwest Arkansas
 Child Care Aware of Washington
 Child Care Connections, Inc.
 Child Care Network
 Child Care Resource Center (NC) - Work Family Resource Center
 Child Care Resource Center, Inc. - Ohio
 Child Care Resource Center, Inc. - California
 Child Care Resources, Washington
 Children & Families First
 Children's Resource Center
 Community Action - CCR&R
 Community Service Council of Tulsa
 County of Maui
 Early Childhood Council - Yuma, Washinton & Kit Carson Counties
 Early Education and Care Connections, Inc.
 Education Station Academy
 Families First of MN
 Family Child Care Association of San Francisco
 Family Enrichment Newtork, Inc.
 Grow in Peace Child Care Center
 Harvard Park Children's Learning Center North
 Howard County Office of Children and Families
 Hyer Street Preschool

Illinois Network of CCR&R Agencies
 Joyful Tots Childcare and Learning Center
 Kids Comprehensive Services, LLC
 Lakes and Prairies Community Action Partnership
 Lane Community College Quality Care Connections
 Little Blossoms Childcare
 Little Moon Child Care
 Little Playschool

Members/Non-Member - Organization

Milestones
 National Association for Family Child Care
 National Child Care Association
 NC CCR&R Council
 Oklahoma Partnership for School Readiness
 Patchwork Terrace Montessori Community Pathways LA
 Programs for Parents
 Quality Care for Children
 Rhode Island Association for the Education of Young Children
 South East Education Cooperative
 Southeast Alaska Association for the Education of Young Children
 Stepping Stones Learning Center of Littleton
 The Child Care Resource Network
 The Childcare Network
 The Children's Cabinet, Inc.
 The Family Conservancy
 The Oaks Children's Academy
 The Rock @ Stony Point Learning Center
 Tina's Tender Love & Care Daycare
 Washington County Child Care Foundation
 Western Oregon University
 Women's Business Development Council (WBDC)
 Wu Yee Children's Services

Thank You to Our Sponsors



We're on a mission to create positive change for children.



Introducing the Child Universal Success Platform (CUSP)

CUSP is an industry-leading Early Childhood Integrated Data System (ECIDS) that integrates population data and administrative data from disparate sources at state and local agencies.

We use data to make a difference

Help Families

CUSP includes, integrates, and models all children in a state, not just served children.

Match Services

CUSP allows for flexible configuration of age and income requirements to align with state-specific eligibility criteria.

Work Smarter

Designed to seamlessly and rapidly ingest and integrate data at all levels of aggregation and granularity from disparate data systems.

Engage Quickly

CUSP offers the advantages of flexibility, scalability, advanced analytics tools, easy collaboration, and cost-efficiency.

Analyze Providers

CUSP establishes a unique record of every program/service at the site level in a state.

Look Deeper

CUSP creates a comprehensive profile for every child in the state, blending real-life information with enriched data insights.

3Si was founded in 2012 to help governments, nonprofits, and philanthropies use data and information to make decisions and create positive change.

Learn more at: www.team3Si.com

Equip yourself with the knowledge and skills to lead

Over 300 evidence-informed, on-demand courses for early childhood and school-age professionals



extension.psu.edu/programs/betterkidcare



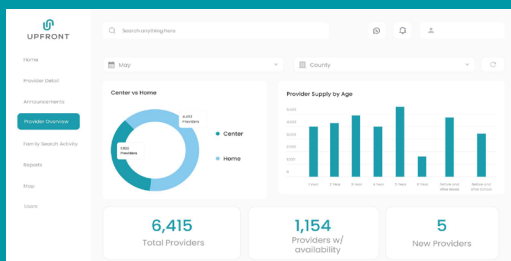
PennState Extension

BETTER • KID • CARE

Please visit extension.psu.edu/alternate-format-request to request this publication in an alternative format accommodation due to a disability. Penn State is an equal opportunity, affirmative action employer, and is committed to providing employment opportunities to all qualified applicants without regard to race, color, religion, age, sex, sexual orientation, gender identity, national origin, disability, or protected veteran status.

The Modern Platform for ECE

A centralized data system for every family, provider, and administrator.



UPFRONT

Learn more at allupfront.com

Affordable employee health care access for small business owners and educators attending the Leadership Institute Conference of CCAoA

Now with Reduced Employer Pricing

And now with expert business advice, consultation, and support!



with



Employee* access to virtual health care programs



Helps employee recruitment and retention



Professional business advice from experts and consultants

* Family members and 1099s, too!

Select the CuramLife package that's the best fit for your employees and their families.

CuramLife.com



800-651-1237
discover@curamlife.com



Save the Date!

Child Care Aware® of America's
Symposium 2025

May 4 - 7
Arlington, VA

**PARENTS
CAN'T AFFORD TO PAY...**

**PROVIDERS
CAN'T AFFORD TO STAY...**

**THERE IS
A BETTER
WAY.**



Voices for Utah Children is proud to partner with ChildCare Aware of America to build public investment in quality childcare for all kids.

www.utahchildren.org



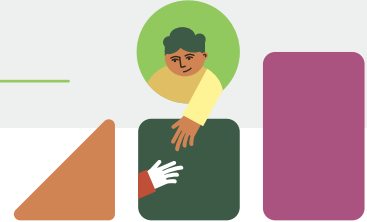
Give Happy ★ ★ ★ ★ ★ ★ ★ ★ ★ ★ ★ ★ ★ ★

so military kids can grow, learn, and share more hugs like these! Choose CCAoA through the CFC using charity code **12300**



COMPREHENSIVE SOLUTIONS WITH A PURPOSE

TCC Solutions’ success is powered by an unmatched combination of technology and services led by subject-matter experts. This combination is what makes TCC Solutions the best choice for early childhood education and care serving agencies.



Ascend Modules

Ascend is an early childhood data system that allows **state agencies, providers, families** and **early childhood educators** to conduct all of their early childhood business—in one place.



Ascend Benefits

- DESIGNED FOR MOBILE COMPATIBILITY
- INTERACTIVE APPLICATION WIZARDS
- USER ROLE-BASED ACCESS
- MULTILINGUAL TRANSLATION CAPABILITIES
- DIGITAL FILE REPOSITORY
- COMMUNICATION AND ENGAGEMENT CAPABILITIES
- AWS AND AZURE HOSTING OPTIONS
- FLEXIBLE INTEROPERABILITY

TCC is a Proud Sponsor of the Child Care Aware of America 2024 Leadership Institute

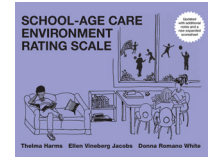
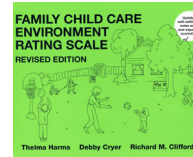
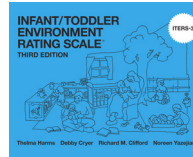
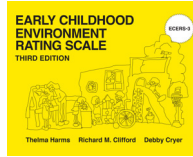
Come see us in Salt Lake City October 16-17 or find us online every day @tccsolutions.com

Relax with us in the VIP Lounge!

Step into our VIP Lounge to recharge, connect, and dive into strategic conversations shaping the future of early childhood education. Meet with experts who understand the critical role data systems play in solving today’s challenges, and discover how our solutions can empower your state to drive impact. Whether you’re looking to network or explore innovative tools, our VIP Lounge is the perfect space to learn and relax. Let’s build the future of early childhood together.



**Branagh
Group**



In Partnership with the Authors of the Environment Rating Scales

TWO PRODUCTS, ONE GOAL — CONTINUOUS QUALITY IMPROVEMENT



LearnERS

ERS Professional Development



Professional development aligned with the Environment Ratings Scales

- Demonstrates quality practices with visual examples from programs
- Provides opportunities to learn, reflect, and improve
- Choose modules to support individualized professional growth
- Empowers educators to make changes
- Available online 24/7 in English and Spanish
- Awards CEUs and CDA training hours



ERS Data System

Mobile Assessment Software

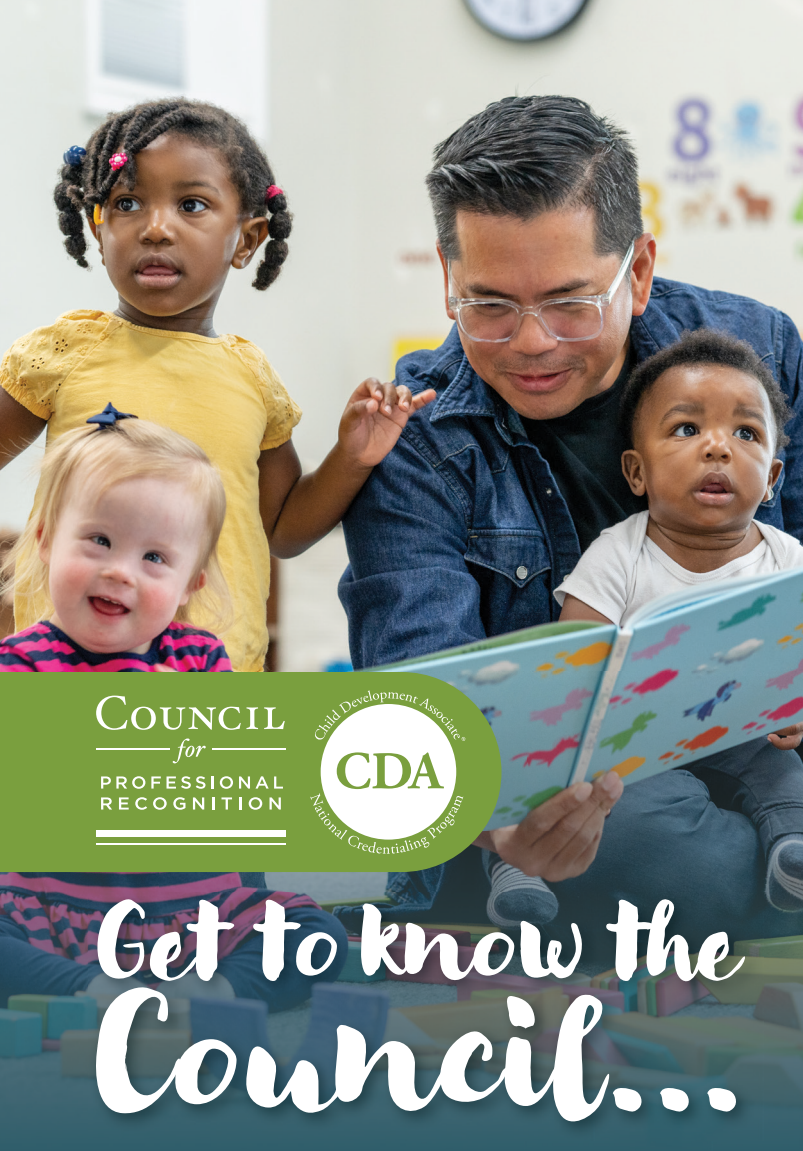
Accurate and reliable scoring of the Environment Rating Scales

- Calculates item, sub-scale, and overall scores automatically
- Reflects the most recent notes for clarification from the authors
- Includes data-driven analysis tools to identify trends across programs
- Utilizes CQI reporting to empower providers and directors
- Leverages assessments as learning tools to promote individualized professional development



ERS® and Environment Rating Scale® are registered trademarks of Teachers College, Columbia University

www.BranaghGroup.com • BInfo@BranaghGroup.com



COUNCIL
for
PROFESSIONAL
RECOGNITION



Get to know the Council...



About the Council

Advancement for early educators through high-quality, competency-based credentialing.

cdacouncil.org/about



About the CDA[®] Credential

Advance your career in early childhood education.

cdacouncil.org/cda



Advanced ECE Professionals

Become a CDA PD Specialist™ to support the career goals of early educators.

cdacouncil.org/pds



Annual Conference

Register and join 200+ ECE professionals to elevate and unify the ECE field.

cdacouncil.org/eelc

Conozca al Concilio...



Acerca del Concilio

Crecimiento para maestros de educación infantil a través de credenciales de alta calidad basadas en competencias.

cdacouncil.org/es/sobre-el-concilio



Acerca de la Credencial CDA[®]

Avance en su carrera en educación infantil.

cdacouncil.org/es/caminos-del-educador



Profesionales Avanzados en Educación Infantil

Vuélvase un Especialista en Desarrollo Profesional CDA™ para apoyar las metas profesionales de los educadores tempranos.

cdacouncil.org/es/caminos-de-carreras-avanzadas



Conferencia Anual

Inscríbese y únase a más de 200 profesionales de educación infantil para elevar y unificar esta profesión.

cdacouncil.org/es/conferencia-anual

Follow us | Síganos @cdacouncil

