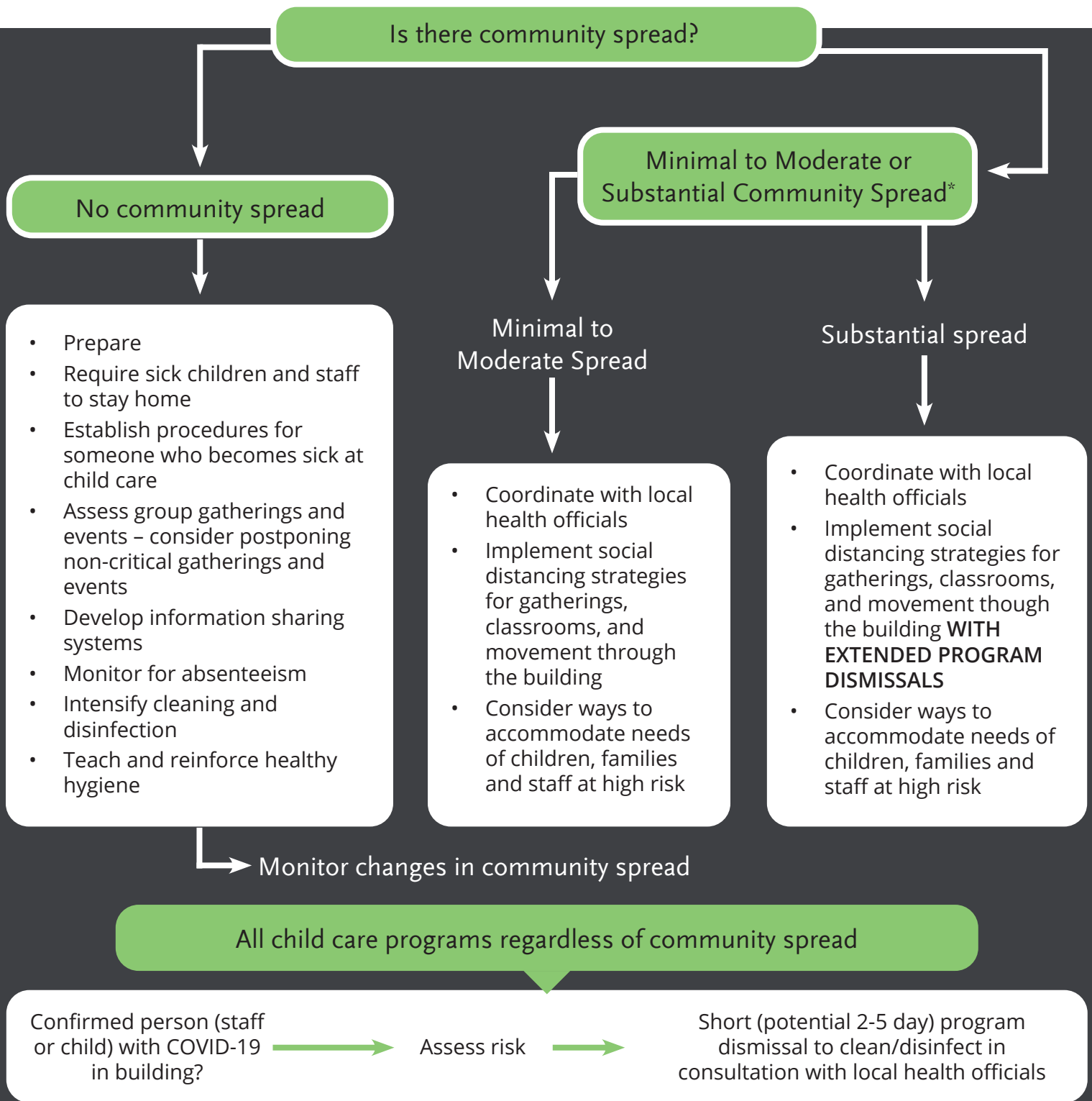


CONSIDERATIONS FOR CHILD CARE CLOSURE DUE TO COVID-19

The following has been adapted for child care providers from CDC Guidelines. Last updated 11/10/2020



Understanding that each community is different, contact your CCR&R or visit www.childcareaware.org to learn more about your options.

*Minimal to moderate spread is widespread and/or sustained transmission with high likelihood or confirmed exposure within communal settings. Substantial community spread is large scale community transmission, with health care staffing significantly impacted, and multiple cases within communal settings.

