



# Post Election Webinar

Thursday, December 5



# Housekeeping

- This presentation is being recorded and will be sent to all registrants.
- Please use the Q&A feature to submit your questions throughout the webinar.
- All attendees are muted. Please use the chat to engage with one another and the presenters.

# Presenters

---



**Anne Hedgepeth**

*SVP, Policy and Research*



**Elise Cranston**

*Director, Advocacy*



**Diane Girouard**

*State Policy Senior Analyst*



**Rachel Wessler**

*Policy Analyst*



---

# Introduction





# Table of Contents

1. What Happened?
  - a. At the Federal Level
  - b. At the State Level
2. What Does it Mean?
3. What Can We Do?

---

# What Happened at the Federal Level



# Election Results

## House of Representatives

- 220 Republicans – 215 Democrats
- Republicans retain control
- Speaker Mike Johnson (R-LA)
- Cabinet nominations may narrow vote margin (temporarily)

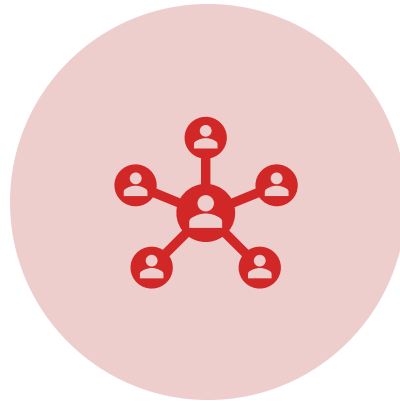
## Senate

- 53 Republicans – 47 Democrats
- Flipped Party Control
- New Majority Leader – John Thune (R-SD)
- Most Senate actions require 60 votes

# New Congress and Administration



REPUBLICAN TRIFECTA  
REPUBLICANS CONTROL THE  
WHITE HOUSE, SENATE, HOUSE



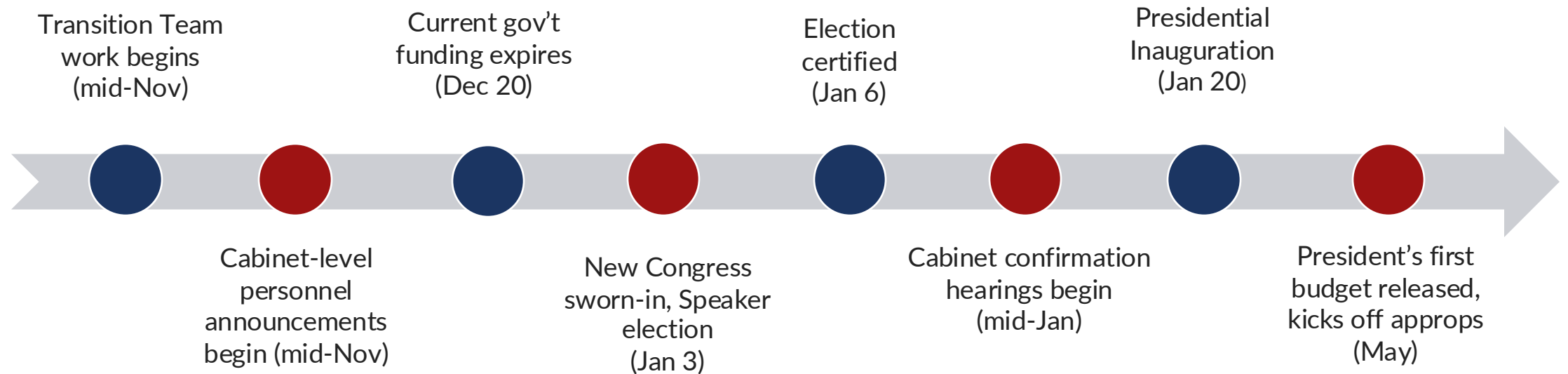
CABINET PICKS  
SECRETARY OF HEALTH AND  
HUMAN SERVICES



CONGRESSIONAL CHILD CARE  
COMMITTEES  
LEADERSHIP AND MEMBERS



# Expected Key Dates



## Immediate priorities in new Congress:

- Debt ceiling
- Expiration of Tax Cuts, Possible Border + Energy Reconciliation Bill
- FY26 appropriations process starts in spring

---

# What Happened at the State Level



# Political Landscapes in States

Legislative races in 44 states:

- Increased number of states with divided governments
- Decreased number of states with veto-proof majority

Gubernatorial elections in 11 states:

- Re-elected: UT, MT, VT
- Newly Elected: DE, IN, MO, NC, NH, ND, WA, WV

# Ballot Measures

## Statewide Ballot Measures

- Initiative 2109 (WA)

## Local-level ballot measures

- Measure I (Sonoma County, CA)
- Measure Y (Pomona County, CA)
- Proposition A (Travis County, TX)
- Measure 1A (Grand County, CO)
- Early Care and Learning Proposal (St. Paul, MN)

---

# What Does This Mean for Child Care Policy?





# Federal

- Plug into immediate major priorities for the new Congress – tax, appropriations
- Long-term work on education, champion seeking, continuing the fight
- What is CCAoA doing?
  - Released [statement](#) to next Administration
  - Writing transition memo
  - National coalition efforts
  - Meetings with transition team and new members of Congress

# State

- Critical to deepen and strengthen the work at the state-level
- Covid relief dollars drove progress in all states
- Some states continuing investments with additional general funding to:
  - Extend stabilization grants/wage supports
  - Improve subsidy reimbursement and payment practices
  - Expand subsidy eligibility and access for families
- Other states have reverted to pre-pandemic policies due to loss of federal relief \$\$ and budget constraints

# State

In 2025, states will have opportunities to address child care policy:

- All states legislatures in session, 47 states will need to pass budgets
- Most states will start with a fresh slate of bills to consider
- New legislators and changes in leadership
- Meeting new CCDF requirements
- ARPA State and Local Fiscal Recovery Funds

But may also face challenges:

- First legislative year without federal child care relief funding
- Potential decreases in state general fund revenue
- Push to roll back regulations in lieu of allocating more funding (“quick fixes”)

# Questions?

---

# What Can We Do?







# Getting Engaged in the 2025 Child Care Landscape

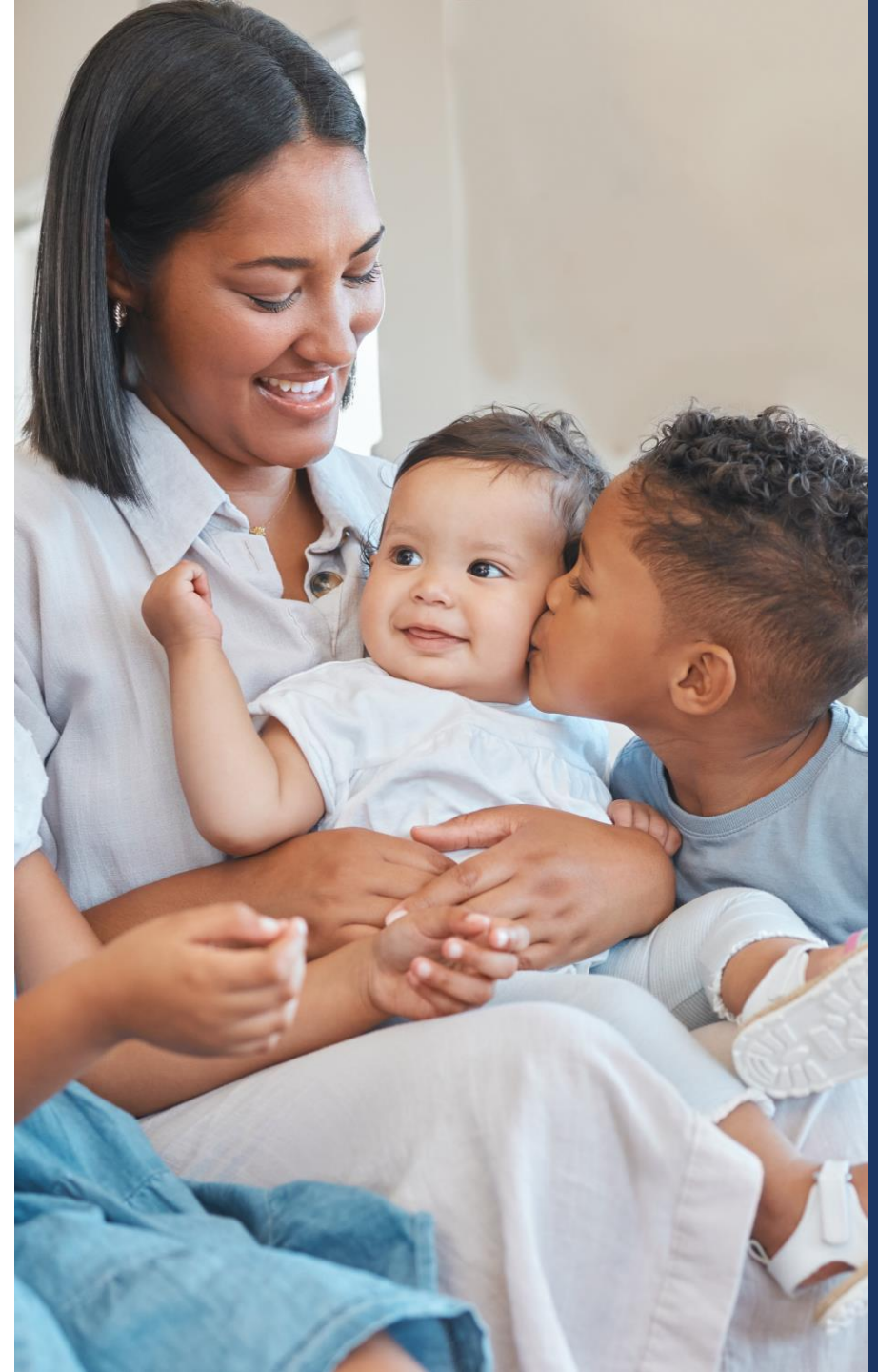
There are needs and opportunities to engage at both the federal and state level.

# FY25 Funding

- Congress hasn't funded FY25 yet, including child care.
- We need to keep funding child care at the top of their to-do list.



<https://qrco.de/bcynoq>



# Building Relationships



CULTIVATE  
CHAMPIONS



PROVIDE ONGOING  
EDUCATION

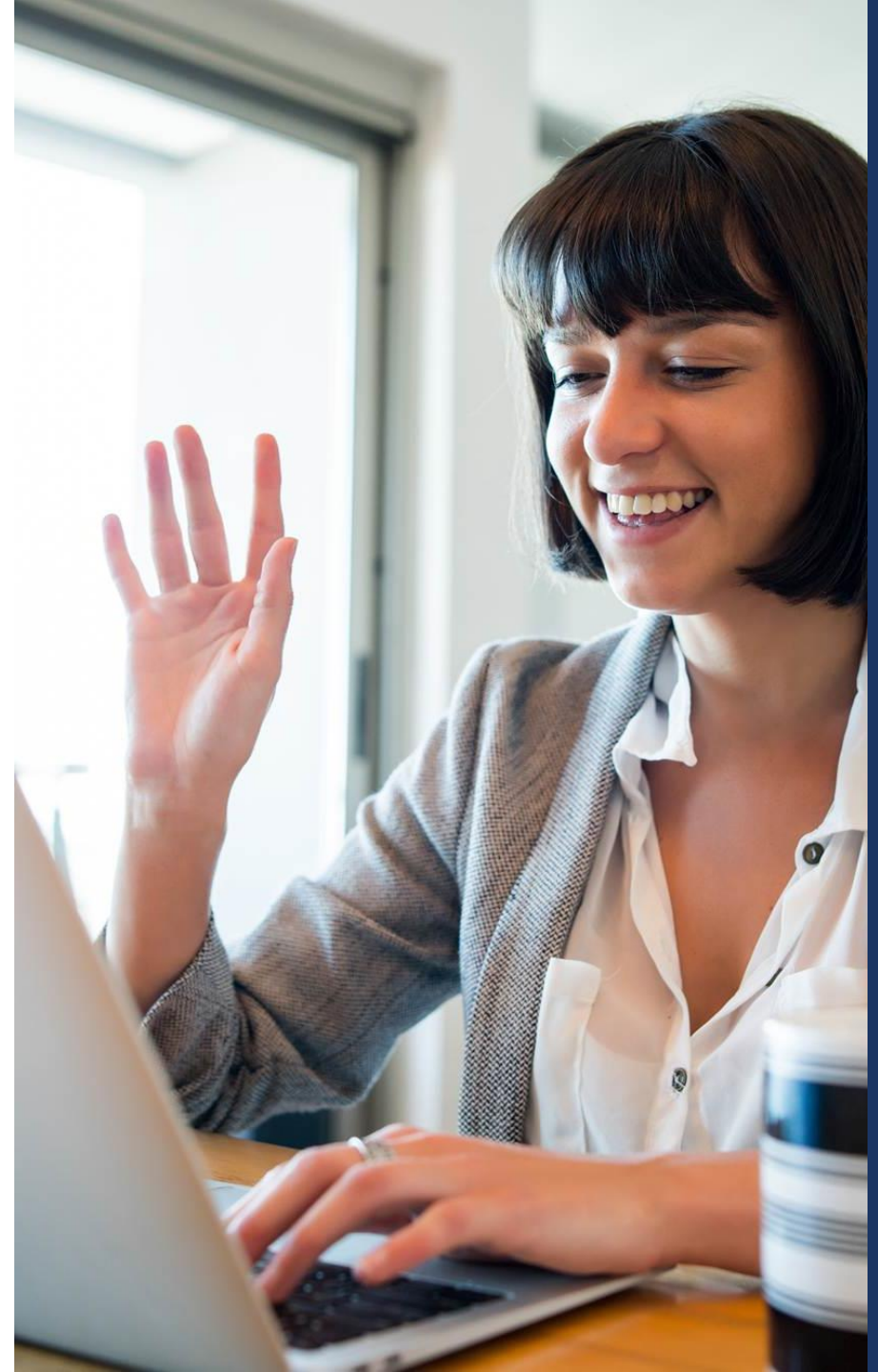


BECOME A  
TRUSTED EXPERT

---

# Stay Connected With Us

- Policy updates
- Opportunities to connect with lawmakers
- Deep-dive on child care issues
- Ongoing advocacy resources



# Questions?



# Thank You!



