

RAISING
CHILD CARE,
RAISING
AMERICA
MAY 19-22

Visualizing Emergency Preparedness: How Data Helps CCR&Rs Respond to Disasters



RAISING
CHILD CARE,
RAISING
AMERICA
MAY 19-22

Speakers



Holly Nett

*Director Child Care Emergency
Partnerships,
Child Care Aware of America*



Julie Coats

*Director, Emergency Preparedness
and Response
Child Care Aware of America*



Alex Cooper

*Director, GIS Research,
Child Care Aware of America*



Nicole Higa

*Resource and Referral
Manager,
PATCH Hawaii*

Agenda

- 1 Overview: EPRR helps CCR&Rs prepare for emergencies
- 2 CCR&Rs using Data & GIS Maps to prepare and respond to emergencies
- 3 Spotlight example: Hawai'i PATCH & Maui Fires map dashboard
- 4 Group Discussion

Overview: EPRR helps CCR&Rs prepare for emergencies

- Emergencies will happen
- Child care providers are on the frontlines
- How child care providers respond matters; they provide physical and emotional support for children, families, and staff
- Child care is an essential service to the community



CCR&Rs Role in Emergencies

- Trusted Entity
- Established Presence in Local Communities Before, During, and After Disasters
- Wide Reach to Parents, Providers, Local and State Agencies



Resources

www.childcareprepare.org



The screenshot shows the website's navigation bar with the logo and links for Member Login, Help for Military/VA's Families, and English. The main navigation includes About, Issues, Families, Providers, CCR&Rs, Events, and Resources. The featured section is titled "Crisis and Disaster Resources" and includes a sub-header "Crisis and Disaster Resources" and a paragraph: "Children and families count on caregivers to keep children safe when the unexpected happens. Child Care Aware of America is here to help you prepare for and respond when emergencies arise." Below this are three featured sections: "CCR&R Grants" (with a "Search Here" button), "CCR&R Competencies for Child Care Emergency Preparedness, Response and Recovery" (with a "Learn More" button), and "Emergency Preparedness Resources" (with a "Learn More" button). A "State by State Resources" section is also visible, featuring a dropdown menu for "Select a State" and a "Search Here" button.

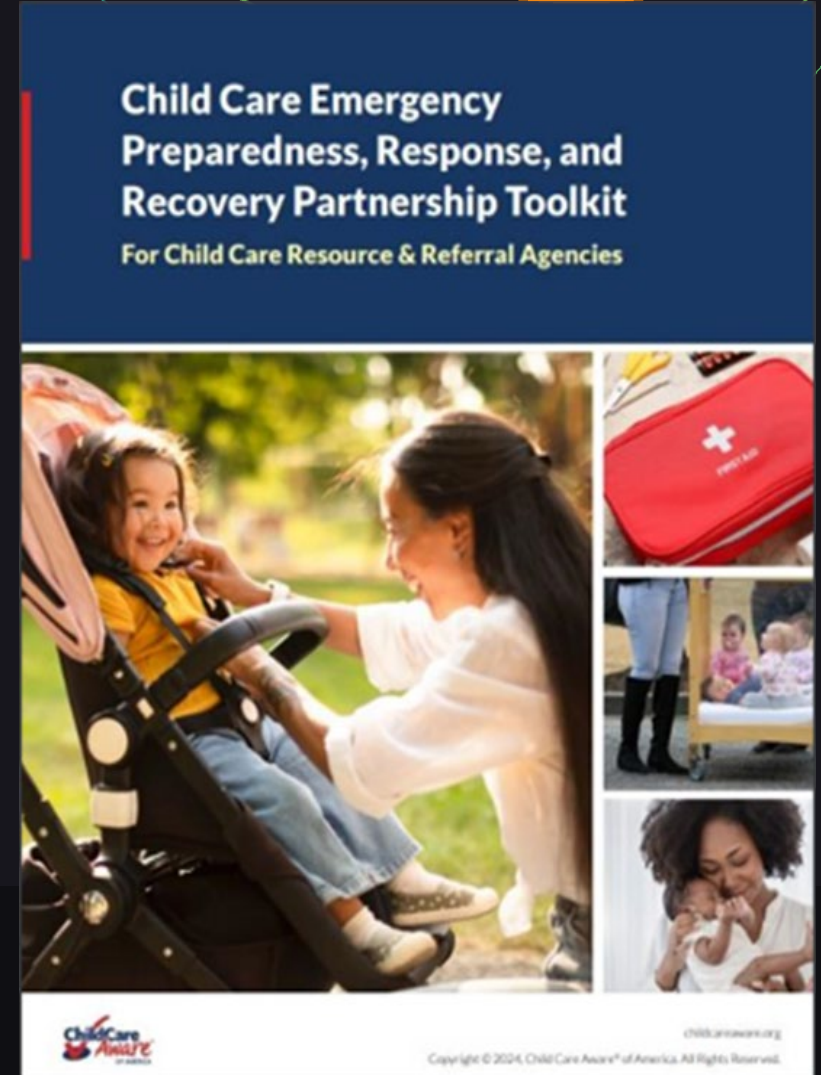
Disaster Readiness Toolkit for CCR&Rs

Designed to support CCR&Rs in their efforts to be better prepared to continue vital services and operations in case of a disaster or emergency .

The screenshot shows the homepage of the 'Disaster Ready CCR&R Toolkit' on the Child Care Aware of America website. The page features a blue header with the organization's logo and a 'Back to LMS Homepage' link. A prominent red banner reads 'Disaster Ready CCR&R'. Below this is a navigation bar with links for 'DISASTER READY CCR&R HOME', 'ACCESS MODULES', 'RESOURCES', and 'SURVEY'. The main content area is titled 'Disaster Ready CCR&R Toolkit' and includes a 'Register' button (with a note 'Already registered? Log in here.') and a 'Please Login' section with a 'Log In' button. A 'How to Login' section provides instructions for registered and non-registered users. The footer contains the Child Care Aware of America logo, 'Site Terms', 'Privacy Policy', and 'Copyright 2014 Child Care Aware® of America'.

Child Care Emergency Preparedness, Response and Recovery Partnership Toolkit for CCR&Rs

A resource for CCR&R staff who are working to establish and build partnerships to support child care emergency preparedness, response and recovery efforts.



RAISING
CHILD CARE,
RAISING
AMERICA
MAY 19-22

CCR&Rs using Data & GIS Maps to prepare and respond to emergencies



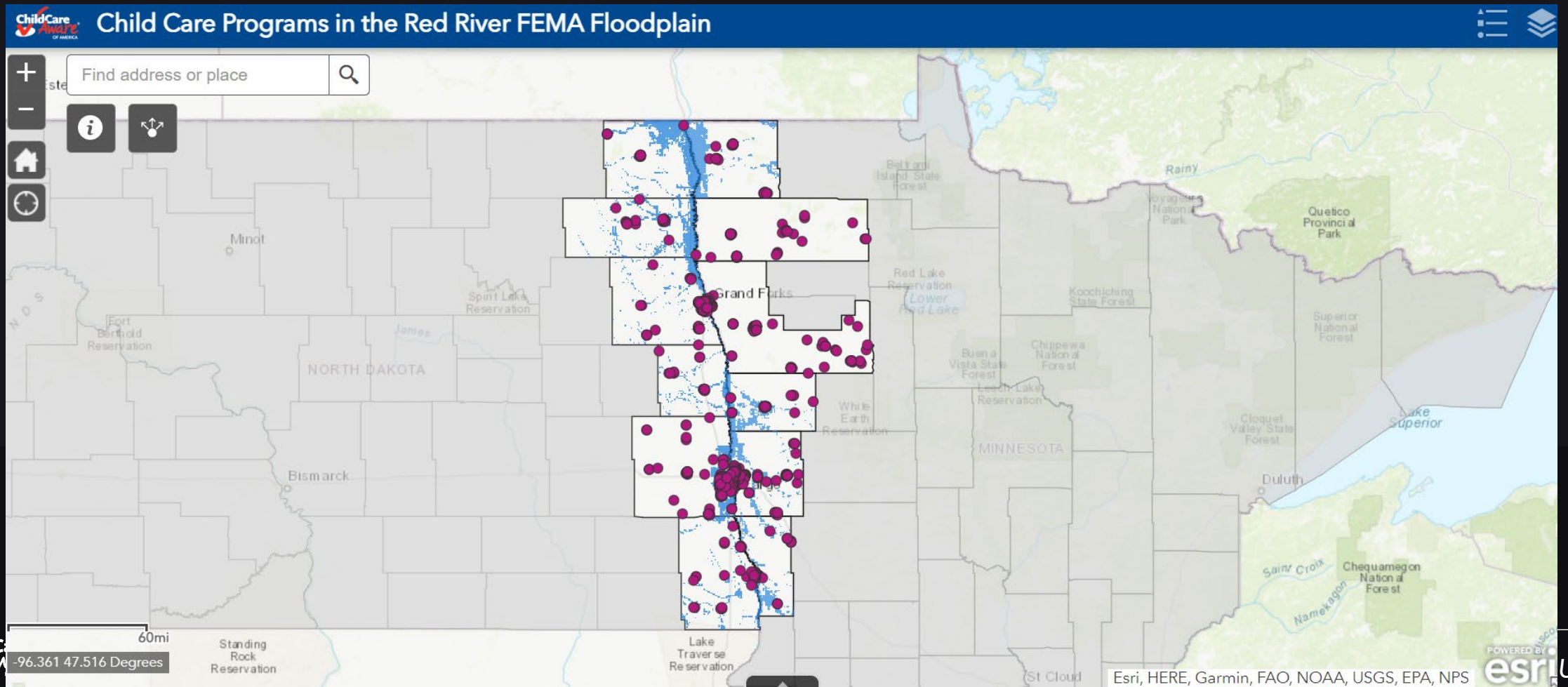
Overview: GIS Mapping

Geographic Information Systems (GIS): set of powerful software tools that create and display maps that help illustrate and communicate complex problems and solutions.

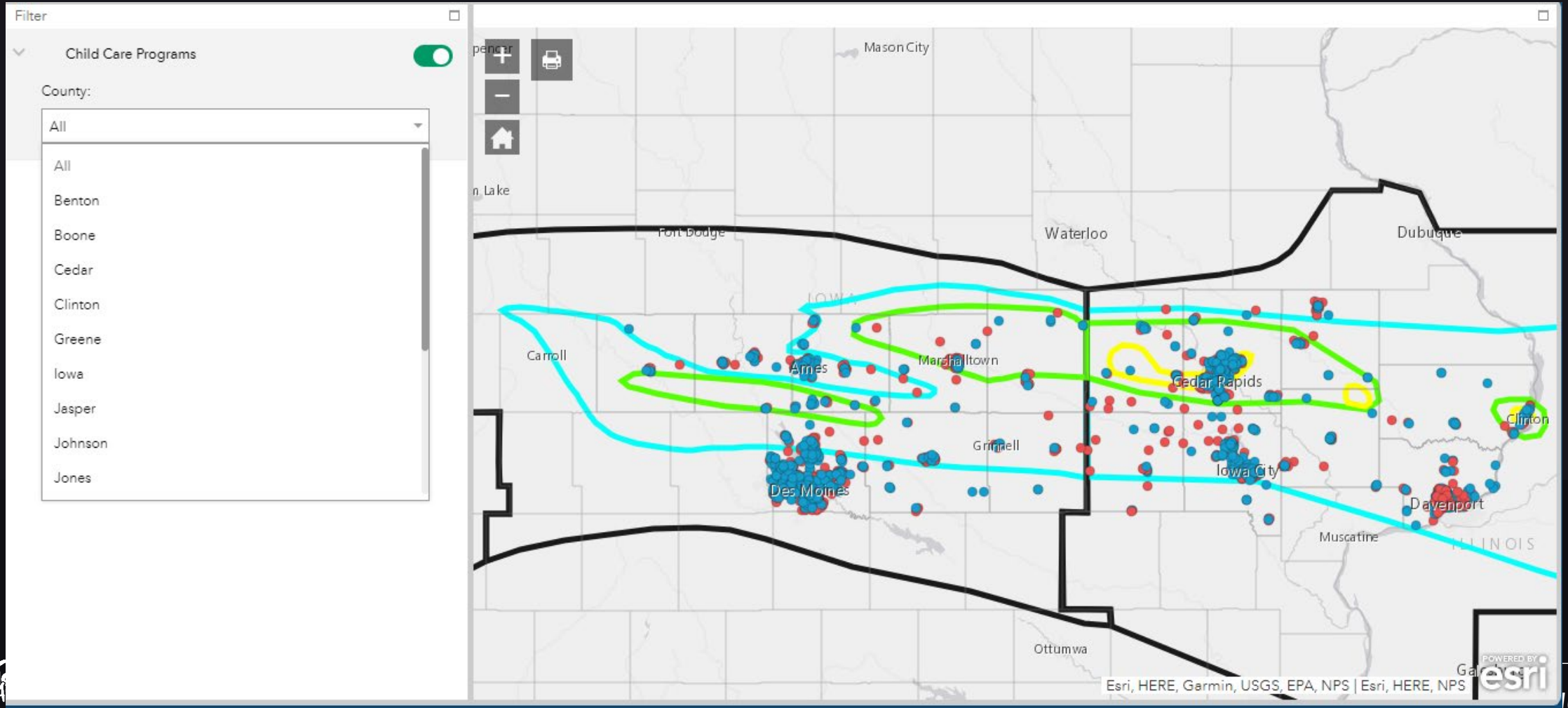
GIS Mapping can

- Help bridge our research and advocacy efforts
- Help strategize with CCR&Rs about resource allocation in their networks
- Effectively use publicly available data to gain a more complete picture of the communities we serve.

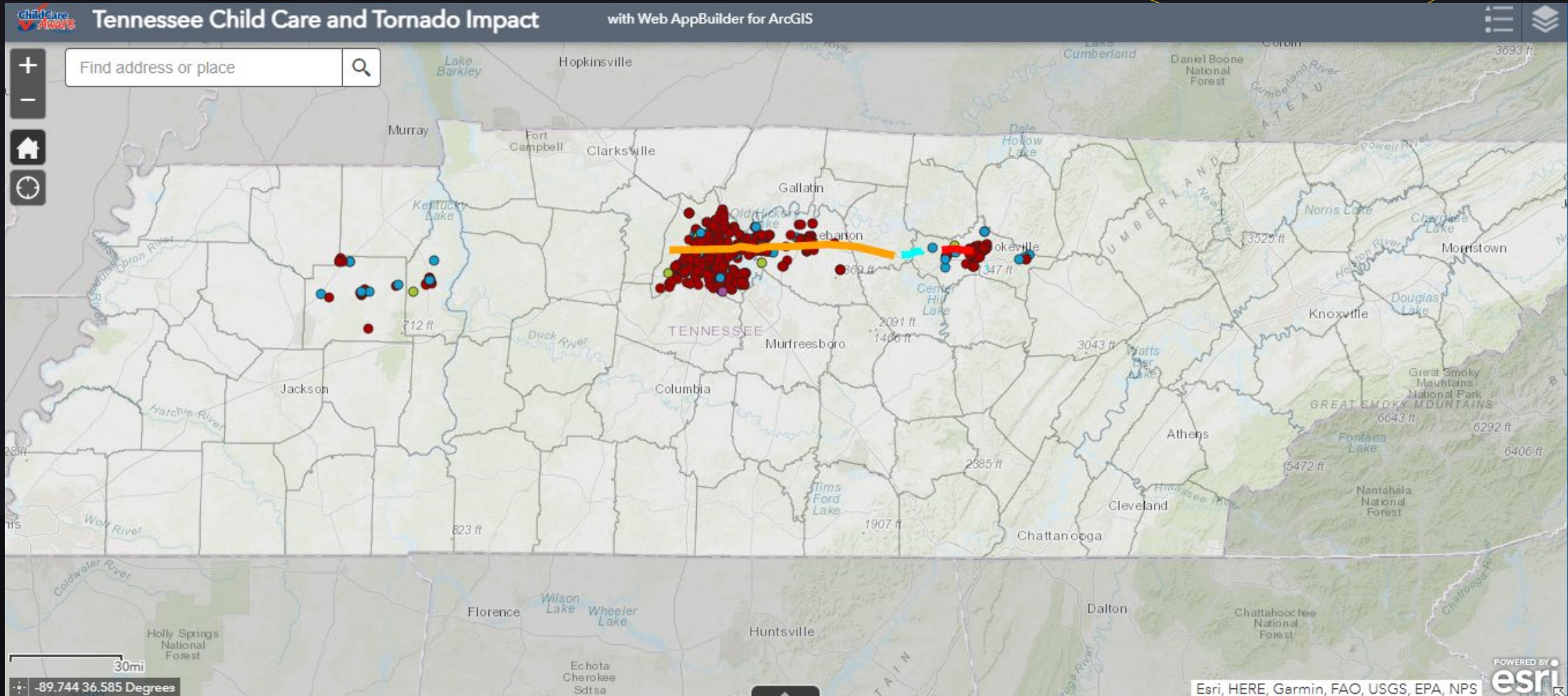
CCR&Rs Using Data & GIS Maps To Prepare And Respond To Emergencies: MN And ND Child Care Programs In Red River FEMA Floodplain: 2019



CCR&Rs using Data & GIS Maps to prepare and respond to emergencies: Derecho storm in Iowa: 2020



CCR&Rs using Data & GIS Maps to prepare and respond to emergencies: TN Child Care & Tornado Impact: April 2021



Spotlight: PATCH Hawai'i Child Care Map Dashboard



PATCH Hawai'i Child Care Map Dashboard



RAISING
CHILD CARE,
RAISING
AMERICA
MAY 19-22

Group Discussion

Community Mapping Exercise



#CCAOASYMPOSIUM24



Free mapping resources for Emergency Preparedness and Response



RAISING
CHILD CARE,
RAISING
AMERICA
MAY 19-22



Rate our session

Thank You

Topic Title

RAISING
CHILD CARE,
RAISING
AMERICA
MAY 19-22

Topic Title

Insert Subheader Here (Optional)



RAISING
CHILD CARE,
RAISING
AMERICA
MAY 19-22

Topic Title

Insert Subheader Here (Optional)



RAISING
CHILD CARE,
RAISING
AMERICA
MAY 19-22

Topic Title

Insert Subheader Here (Optional)



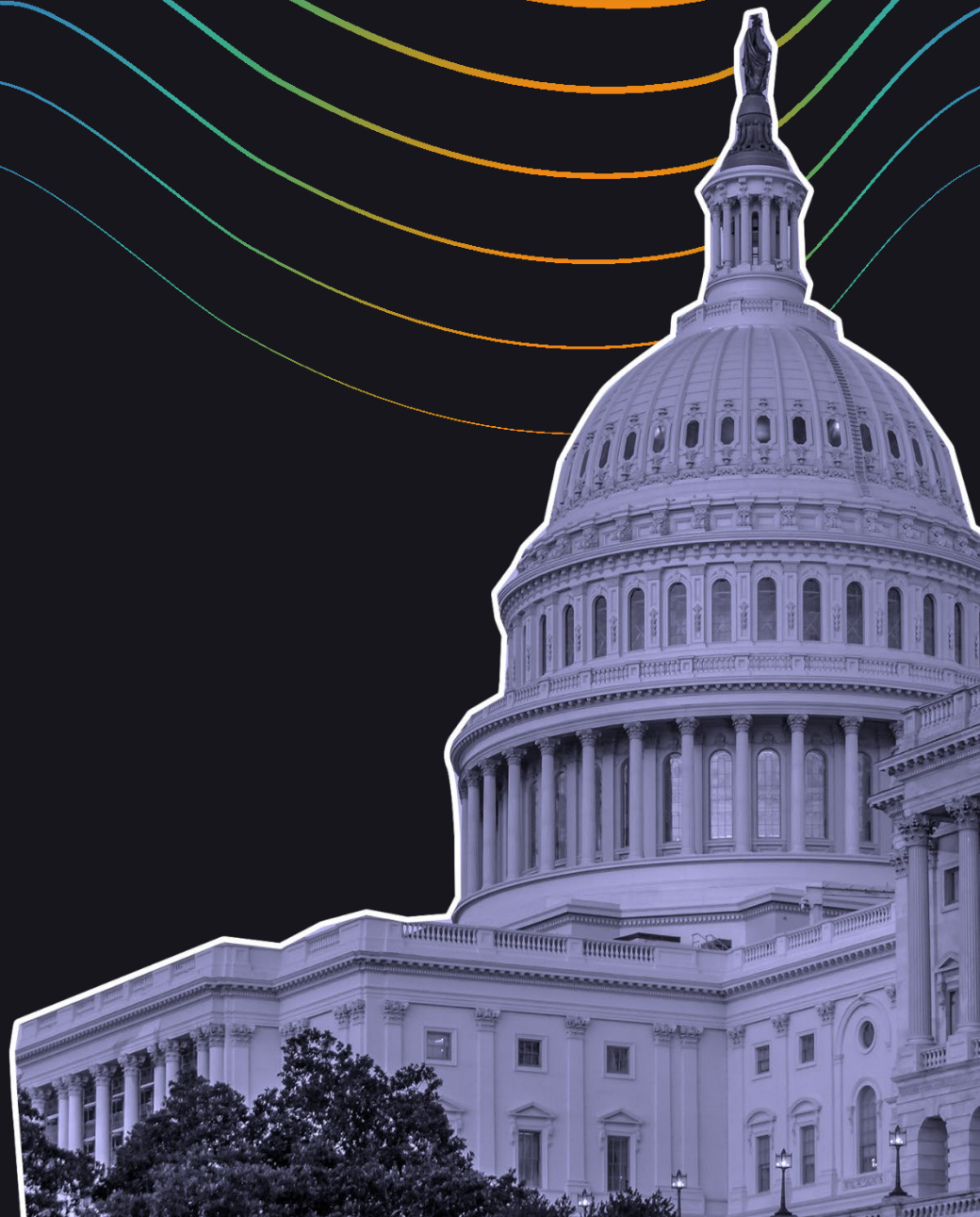
RAISING
CHILD CARE,
RAISING
AMERICA
MAY 19-22

Topic Title

Insert Subheader Here (Optional)



#CCAOASYMPOSIUM24





 Poll Everywhere

Text CCAOA to 22333

TO JOIN OUR INTERACTIVE POLL



RAISING
CHILD CARE,
RAISING
AMERICA
MAY 19-22

Topic Title

Insert Subheader Here (Optional)



Topic Title

Lorem ipsum dolor sit amet, consectetur adipiscing elit, sed do eiusmod tempor incididunt ut labore et dolore magna aliqua. Lorem dolor sed viverra ipsum nunc aliquet bibendum enim. Tellus cras adipiscing enim eu turpis egestas.



RAISING
CHILD CARE,
RAISING
AMERICA
MAY 19-22

Thank You

